

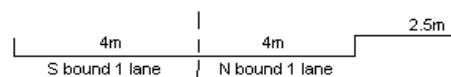
YEAR 2013

COVERAGE (B) STATION 4207

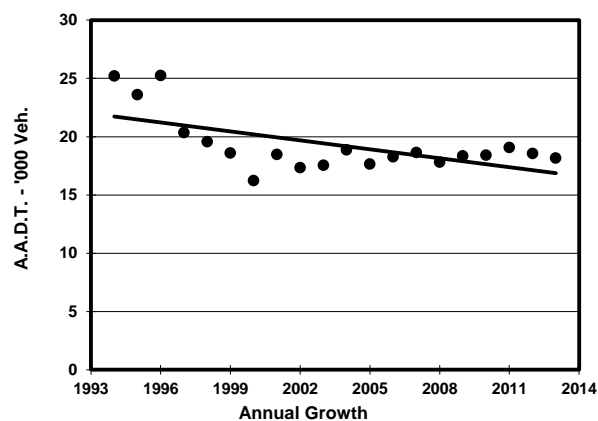
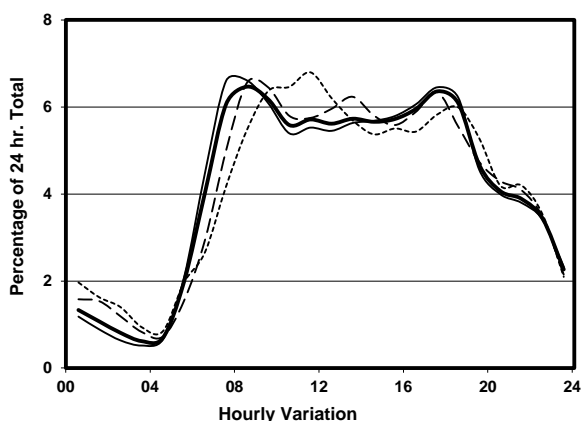
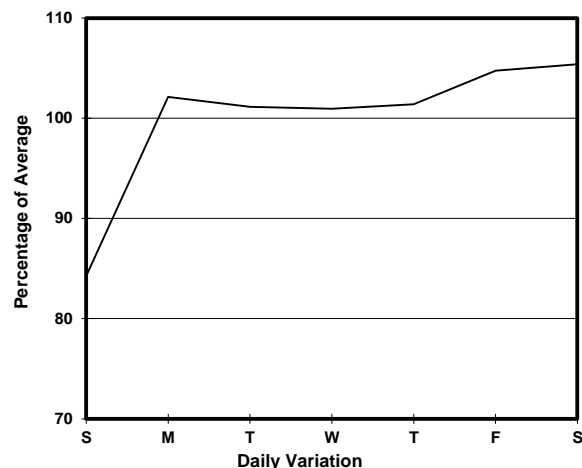
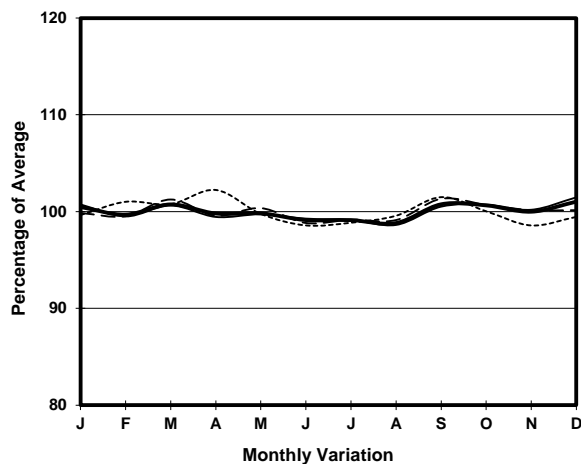
ROAD NETWORK MAJOR

ROAD TYPE DISTRICT DISTRIBUTOR

LINK CHEONG WAN RD & GILLIES AVE S (from RAILWAY TERMINUS to WUHU ST)



1. TRAFFIC FLOW VARIATION AND GROWTH



2. TRAFFIC CHARACTERISTICS (BY DIRECTION)

Parameter	All - Day	Mon. - Fri.	Sat.	Sun.
SOUTH BOUND				
A.A.D.T.	8410	8810	9040	6290
R 12 / 24 - %	73.7	74.5	73.5	68
R 16 / 24 - %	89	89.5	88.8	86.1
AM Peak Hour	0800-0900	0800-0900	0900-1000	0900-1000
One-way flow at AM peak hour	520	560	570	360
T - % (AM)	-	16.9	-	-
PM Peak Hour	1600-1700	1600-1700	1600-1700	1700-1800
One-way flow at PM peak hour	600	630	660	400
T - % (PM)	-	9.8	-	-
Prop.of commercial vehicles - 16 hr.	-	9.8	-	-
NORTH BOUND				
A.A.D.T.	9750	9880	10250	9150
R 12 / 24 - %	69	68.8	68.7	70.2
R 16 / 24 - %	85.6	85.3	86.3	86.8
AM Peak Hour	0800-0900	0700-0800	0800-0900	0900-1000
One-way flow at AM peak hour	660	680	720	620
T - % (AM)	-	2.6	-	-
PM Peak Hour	1800-1900	1800-1900	1700-1800	1800-1900
One-way flow at PM peak hour	580	590	600	560
T - % (PM)	-	7.1	-	-
Prop.of commercial vehicles - 16 hr.	-	5	-	-

3. OTHER INFORMATION AND COMMENT

4. Vehicle classification and occupancy - Monday to Friday

Time		Class of vehicle									
		Motor Cycle	Private Car	Taxi	Private LB	PLB	Goods veh.		Non Fr. Bus	Fr. Bus	
							Light	M & H		SD	DD
0700-0800	Pro	0.0	13.4	53.0	1.4	16.7	8.6	0.5	1.9	0.2	4.3
	Ocp	0.0	1.5	2.0	10.0	14.6	1.3	1.0	14.8	28.5	35.7
0800-0900 Peak hour	Pro	0.7	18.8	41.6	2.1	16.7	7.1	1.1	7.8	0.3	3.8
	Ocp	1.0	1.7	2.3	7.2	16.9	1.2	1.3	15.5	26.0	31.9
0900-1000	Pro	1.4	13.0	48.0	0.3	12.7	12.7	1.7	6.5	0.1	3.5
	Ocp	1.3	1.3	2.2	6.0	15.4	1.5	1.2	9.5	23.0	27.8
1000-1100	Pro	0.3	15.4	57.4	1.3	10.1	9.8	1.6	1.3	0.2	2.8
	Ocp	1.0	1.6	1.7	1.5	15.0	1.5	2.2	4.5	16.0	18.3
1100-1200	Pro	1.5	14.4	43.1	1.5	13.2	17.8	1.9	3.8	0.0	2.8
	Ocp	1.0	1.4	2.0	1.8	14.7	1.4	1.2	13.7	0.0	19.9
1200-1300	Pro	0.4	24.1	49.0	0.4	10.2	10.2	1.5	1.9	0.0	2.4
	Ocp	1.0	1.4	2.1	1.0	14.6	1.5	1.5	25.6	0.0	21.5
1300-1400	Pro	1.3	20.0	46.3	1.3	7.9	16.7	0.4	2.1	0.0	4.0
	Ocp	1.0	1.8	2.2	1.7	14.1	1.7	1.0	20.2	0.0	21.7
1400-1500	Pro	0.8	20.2	49.2	1.6	10.5	12.8	0.0	1.6	0.0	3.5
	Ocp	1.0	1.3	2.0	1.5	13.9	1.6	0.0	1.8	0.0	19.0
1500-1600	Pro	0.7	22.7	43.2	1.8	9.9	16.5	1.1	1.1	0.1	2.9
	Ocp	1.0	1.5	2.1	2.0	14.5	1.4	1.0	27.7	10.0	14.9
1600-1700	Pro	1.1	20.0	43.9	0.4	13.1	14.9	0.4	2.9	0.2	3.3
	Ocp	1.0	1.4	2.1	4.0	12.8	1.4	1.0	13.8	8.5	23.4
1700-1800	Pro	4.0	21.3	45.4	0.8	12.9	9.2	0.0	1.2	0.2	5.0
	Ocp	1.1	1.6	2.2	1.5	15.3	1.5	0.0	27.0	26.0	24.0
1800-1900	Pro	3.3	25.3	43.9	1.1	11.9	7.1	0.4	3.0	0.2	3.8
	Ocp	1.0	1.7	2.4	1.3	15.9	1.5	1.0	8.8	19.5	40.6
1900-2000	Pro	1.0	30.6	45.0	0.3	12.7	3.4	0.0	3.4	0.1	3.4
	Ocp	1.0	1.7	2.4	1.0	16.8	1.7	0.0	6.2	27.0	22.1
2000-2100	Pro	2.1	27.0	50.2	0.0	9.5	2.1	0.4	5.0	0.1	3.6
	Ocp	1.4	1.7	2.2	0.0	15.0	1.4	2.0	7.5	11.0	14.7
2100-2200	Pro	1.2	25.7	45.5	1.2	15.2	2.9	0.0	2.3	0.3	5.8
	Ocp	1.0	1.8	2.1	1.5	13.6	1.6	0.0	1.5	25.5	10.1
2200-2300	Pro	2.3	20.6	55.8	0.5	13.1	0.9	0.0	1.9	0.4	4.5
	Ocp	1.4	2.0	1.7	1.0	14.8	1.0	0.0	1.3	24.0	8.4
16 hours	Pro	1.4	20.7	47.5	1.0	12.2	9.8	0.7	3.0	0.1	3.6
	Ocp	1.1	1.6	2.1	3.2	15.0	1.5	1.4	11.8	21.3	22.4

Legend

Pro. Proportion of vehicles in % (Sum may not add up to 100% due to figure rounding)
Ocp. Average occupancy of vehicles
M&H Medium and Heavy